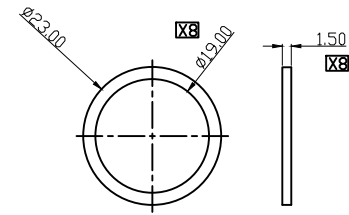
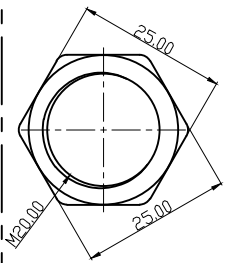
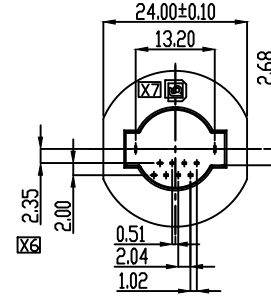
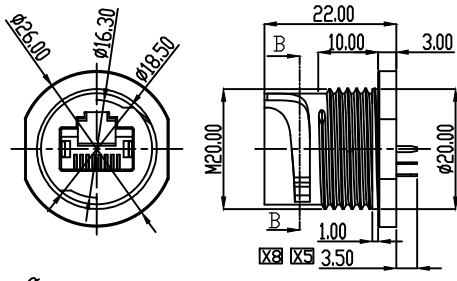


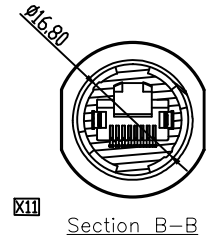
PROPRIETARY INFORMATION  
COMPANY CONFIDENTIAL



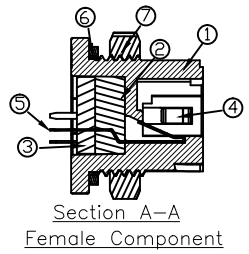
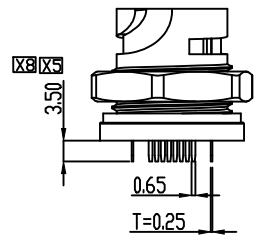
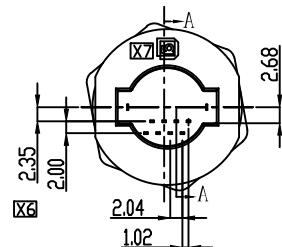
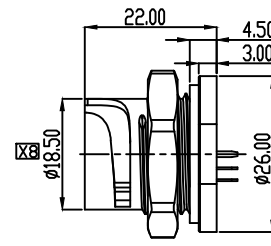
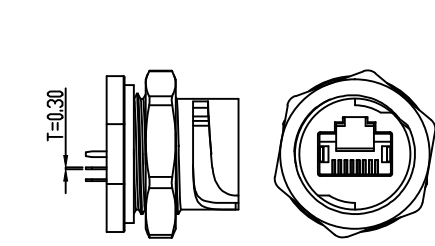
Female

NUT

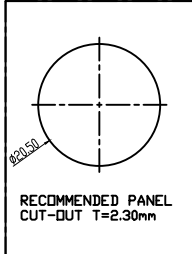
Waterproof Circle 001



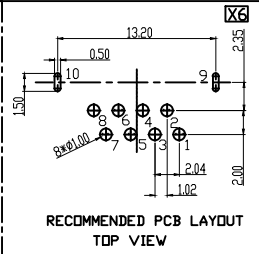
Section B-B



Section A-A  
Female Component



RECOMMENDED PANEL  
CUT-OUT T=2.30mm



RECOMMENDED PCB LAYOUT  
TOP VIEW

REV.	ECN. NO.	DESCRIPTION	ENG	DATE
X1		INITIAL	Knight	06/18/15'
X2		UPDATE DRAWING	Knight	07/10/15'
X3		UPDATE DRAWING	Knight	07/15/15'
X4		UPDATE DRAWING	Knight	08/14/15'
X5		UPDATE DRAWING	Dan	10/15/15'
X6		Modify PCB Layout	Dan	11/05/15'
X7		Modify Logo Position	Dan	11/11/15'
X8		Design Changed	Tim	03/28/16'
X9		Add Note 10	Tim	07/08/16'
X10		Correct	Tim	07/12/16'
X11		Add Section	Tim	08/18/16'

NOTES:

1. Current Rating:1.5Amp max @25 °C
2. Voltage Rating:35VAC max
3. Insulation Resistance:500 megohms min
4. Contact Resistance:30 milliohms max
5. Withstanding Voltage:1000 VAC
6. Durability:750 Cycles
7. Operating Temperature:-40 °C~+85 °C
8. Storage Temperature:-50 °C~+75 °C
9. Waterproof rate:IP67
10. Torque range:15~20 lb.in

ORDER INFORMATION

WAPV-22 08 - A K 1 0 T  
① ② ③ ④ ⑤ ⑥ ⑦

1. TYPE:  
WAPV-22:WATERPROOF RJ45 FEMALE
2. POSITIONS:  
08:08 POSITIONS
3. INSULATOR MATERIAL:  
A: PBT
4. INSULATOR COLOR:  
K: BLACK
5. CONTACT PLATING:  
1: GOLD FLASH
6. SHIELD PLATING:  
0: NONE SHIELD
7. PACKING  
T: TRAY

X10

ITEM	NAME	Q'TY	DESCRIPTION	NOTE
7	NUT	1	PBT+30%G.F	BLACK,UL94 V-0
6	WATERPROOF CIRCLE	2	SILICA GEL	Nature
5	8Pin CONTACT	8	PHOSPHOR BRONZE,GOLD FLASH PLATING OVER 60u" MIN NICKEL UNDER PLATING OVERALL,MATTE 120u"MIN PLATING OVER DIP AREA	T=0.30
4	GROUNDING SHRAPNEL	2	BRASS,NICKEL 60u" MIN PLATING OVERALL	T=0.25
3	WATERPROOFER GLUE	1	LIQUID STATE SILICA GEL	BLACK
2	MOLDING BACK STOPPLE	1	PBT+30%G.F	BLACK,UL94 V-0
1	HOUSING	1	PBT+30%G.F	BLACK,UL94 V-0

GENERAL TOLERANCE	ANGLE TOLERANCE	DRAWN	DATE	
X.± 0.50 .X± 0.38 .XX± 0.25 .XXX± 0.15	X°± 5.0° .X°± 3.0° .XX°± 2.0° .XXX°± 1.0°	Tim	08/18/16'	
MATL	FINISH	CHECKED	DATE	PART NUMBER: WAPV-2208-AK10T
SCALE N/A	UNIT mm	Hill	08/18/16'	DRAWING NO. GT26-210507
SHEET 1 OF 1		APPROVED	DATE	SIZE A4 REV. XII
		Hill	08/18/16'	