

NOTES:

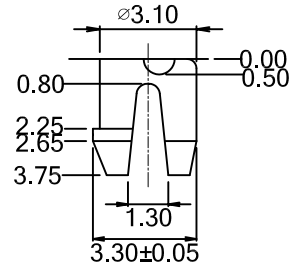
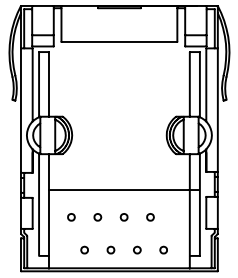
1. MATERIAL:
 HOUSING: PBT POLYESTER UL94V-0 MIXED GLASS FIBER.
 STANDARD COLOR-BLACK

[B] CONTACTS: PHOS. BRONZE PLATED WITH SELECTIVE GOLD ON THE CONTACT AREA.
 OVER ENTIRE PIN WITH 50 u" NICKEL UNDER PLATED.
 RoHS COMPLIANT SOLDER ON SOLDER TAILS.

SHIELD: 0.25mm THICK COPPER ALLOY, PLATED WITH NICKEL.

2. CAVITY CONFIRMS TO FCC RULES AND REGULATIONS PART 68, SUBPART F.

3. RoHS COMPLIANT.



ORDER INFORMATION

RJ45- D 01 A - 88 NF - S5 [C] [B]

SELECTIVE PLATING
 S1=GOLD FLASH PLATING
 S2=GOLD 5u" PLATING
 S3=GOLD 10u" PLATING
 S4=GOLD 15u" PLATING
 S5=GOLD 30u" PLATING

LED CONFIGURATION
 NF= NONE

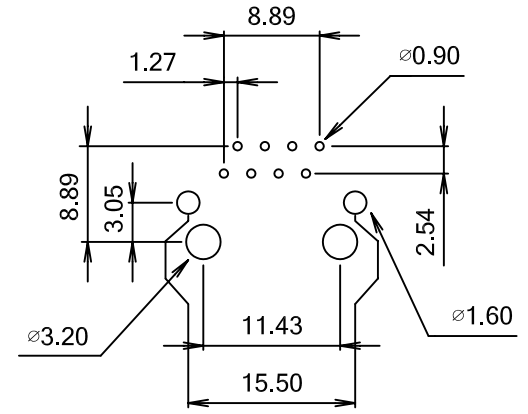
NUMBER OF POSITIONS / CONTACTS
 8 / 8

TOOLING FAMILY


NUMBER OF PORTS

STYLE
 D= TAB DOWN PTH

RJ45 SERIES



PC Board Layout
 TOLERANCE: ± 0.05 mm

				TOLERANCE		 <small>1015 GRANT STREET S.E. ATLANTA, GA 30315</small> <small>a Genesis Electro-Mechanical Company</small>		TITLE: RJ45 8P8C SINGLE PORT W/ SHIELD			
				LINEAR	ANGLES			PART NO.	RJ45-D01A-88NFS5		
[C]	REVISE NOTES 1 CONTACT PLATED AND ORDER INFORMATION	AXL	3/13/08	X. ±	X° ±	APPD:	MAT'L:	DWG NO.	GTI07-30003		
[B]	REVISE NOTES 1 CONTACT PLATED AND ORDER INFORMATION	AXL	5/9/07	.X ± 0.25	.X° ±	CHKD:	FINISH:	UNITS	SCALE	SHEET	REV
[A]	ISSUED	AXL	4/3/07	.XX ± 0.15	.XX° ±	DRWN: AXL	Q'TY:	MM	NONE	1 OF 1	C
REV	ECN NO.	NAME	DATE	.XXX ± 0.05	.XXX° ±						